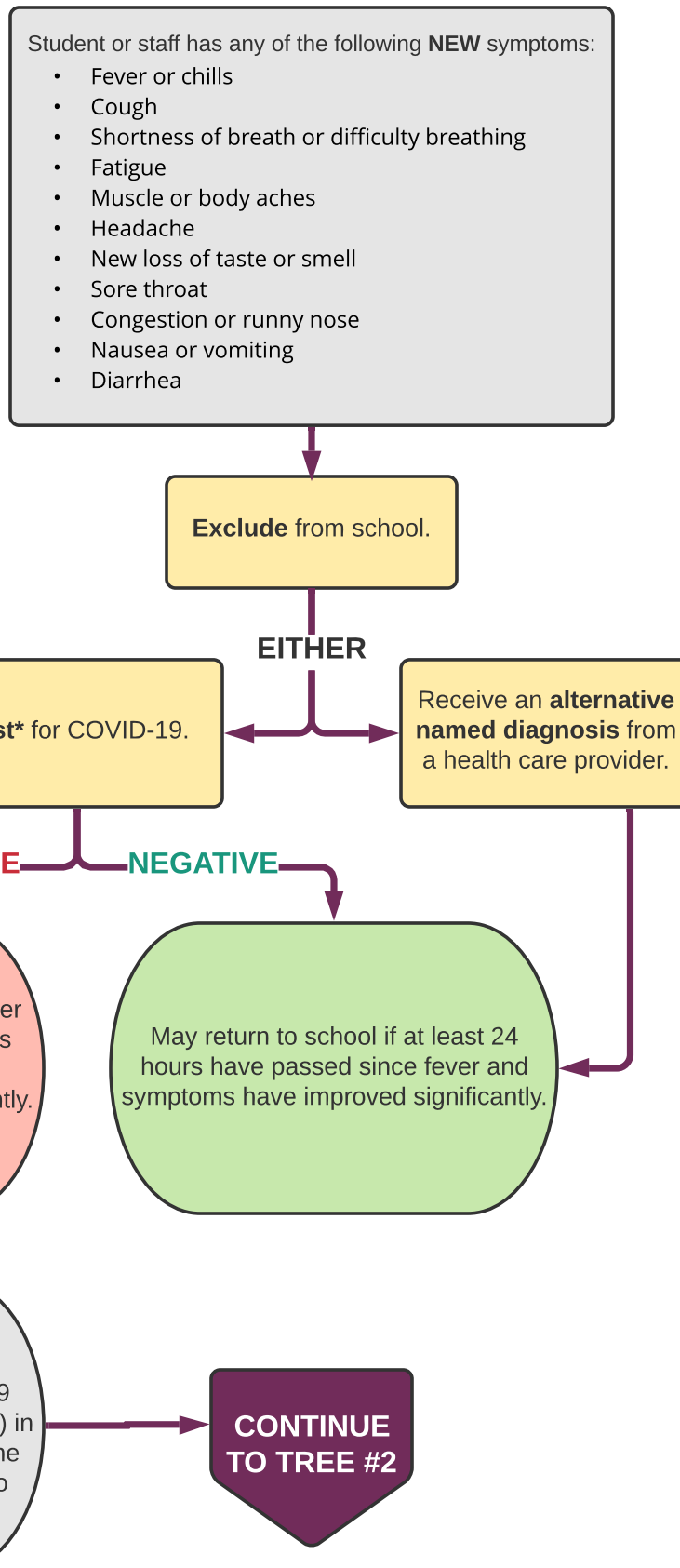


# COVID-19 Symptom & Quarantine Decision Forest for K-12 Schools

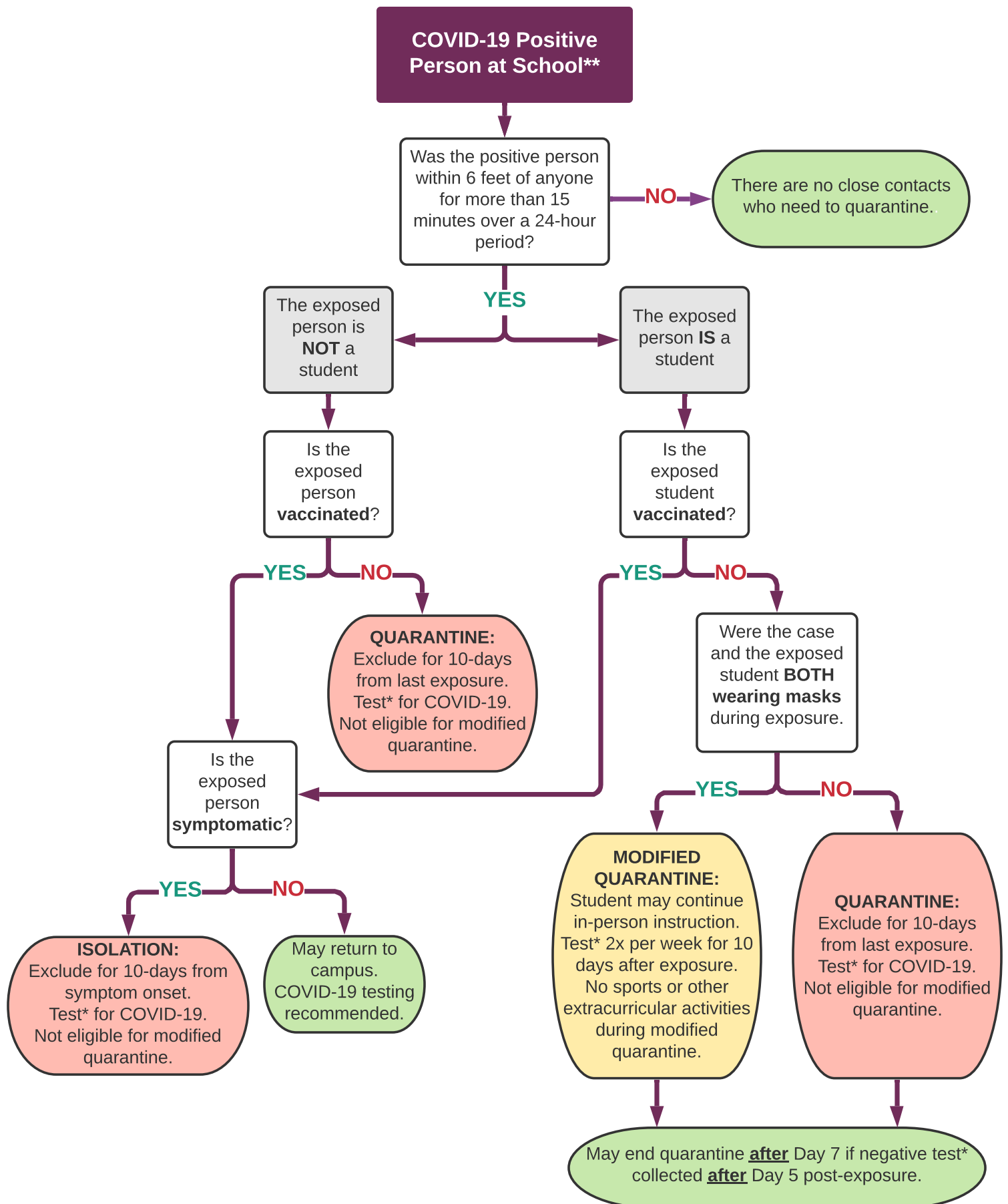
## TREE #1: STUDENT OR STAFF WITH SYMPTOMS



\* PCR or rapid antigen testing are acceptable testing methods.

\*\* School setting in which students are supervised by school staff, including indoor or outdoor school settings and school buses.

## TREE #2: COVID-19 POSITIVE PERSON AT SCHOOL\*\*

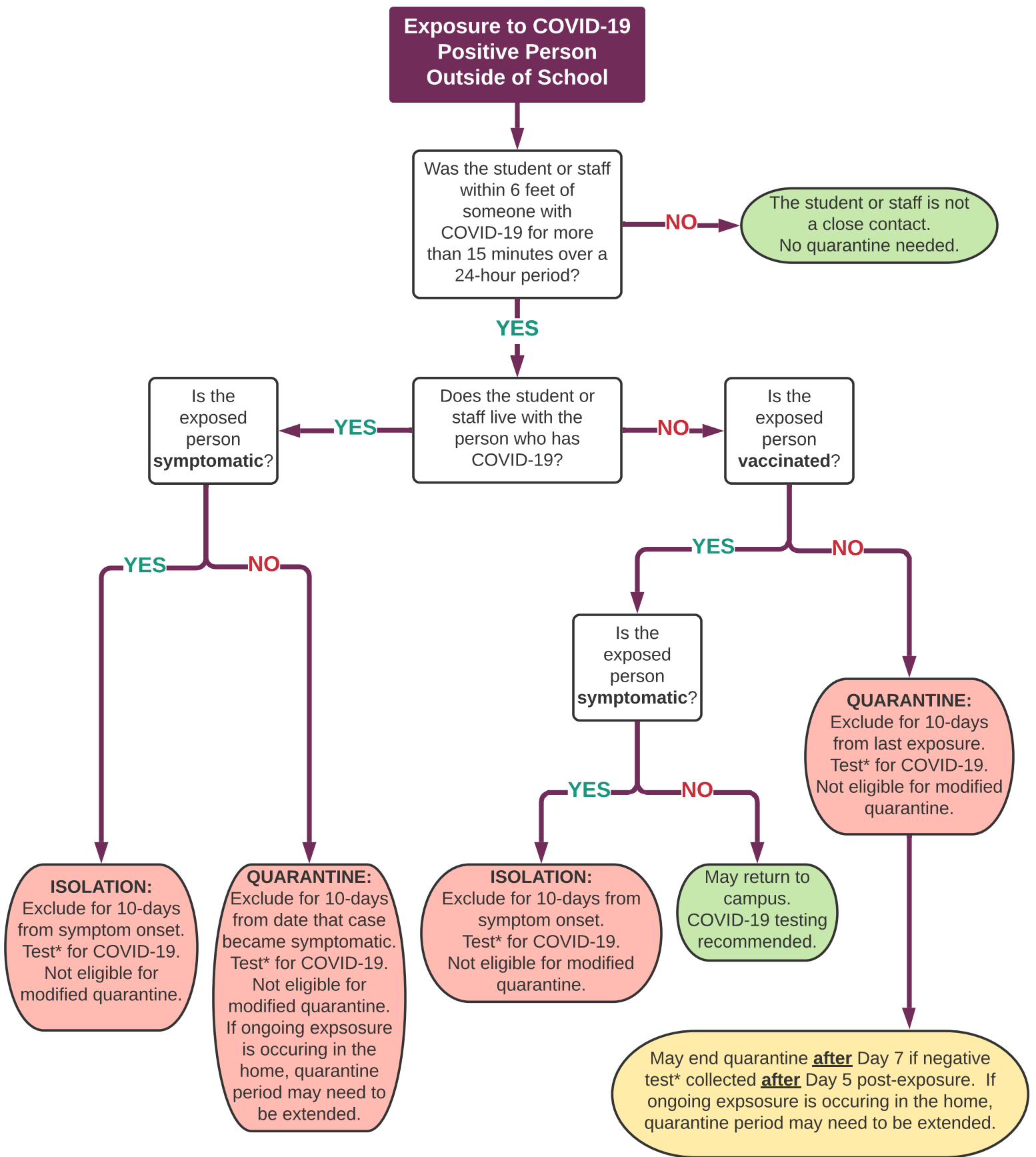


\* PCR or rapid antigen testing are acceptable testing methods.

\*\* School setting in which students are supervised by school staff, including indoor or outdoor school settings and school buses.

August 17, 2021

# TREE #3: COVID-19 POSITIVE EXPOSURE OUTSIDE OF SCHOOL



\* PCR or rapid antigen testing are acceptable testing methods.

\*\* School setting in which students are supervised by school staff, including indoor or outdoor school settings and school buses.

August 17, 2021